

ACT43 Curtain Track

Fitting, operation and maintenance instructions

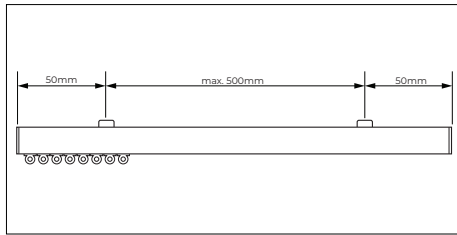
Warning! The operating instructions must be read before operating the blind.

Fitting Instructions for ACT43 Curtain Tracks

This procedure can be completed by non-professionals.

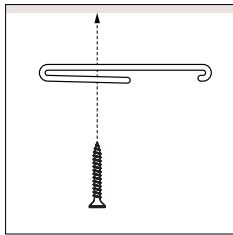
Step 1 - Position the brackets

Ensure that each supplied bracket is positioned at least 50 mm from each end of the track, with any remaining brackets spaced no more than 500 mm apart. Check that all brackets are aligned evenly before securing them in place.



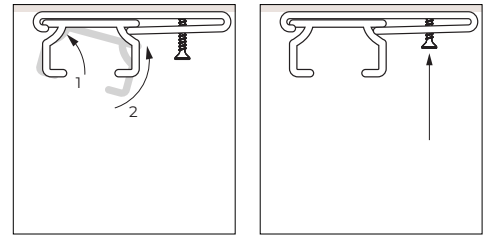
Step 2 - Mark, drill, and secure the brackets

If necessary, mark the screw positions by pencil through the bracket slots. Drill and plug the holes as required, then fix the brackets securely using appropriate fittings. (Please note that screws and fixings are not supplied).



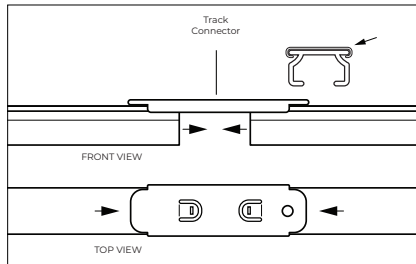
Step 3 - Install the track

Once the brackets are securely fixed, remove the track from its packaging, carefully clip it into the brackets, and tighten the bracket screws to ensure the track is firmly secured in place.



Joined tracks

If your track is longer than 5 metres, it will be supplied in two sections along with a Track Connector. To join sections, slide the provided Track Connector on top the first section of the track, then insert the second section into the connector. Push both sections together until they are fully aligned and securely joined. Once assembled, proceed to Step 3.

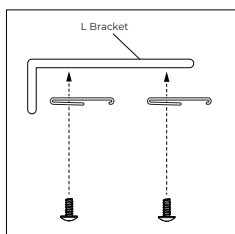


Fitting with L Bracket for double-track installation

This procedure can be completed by non-professionals.

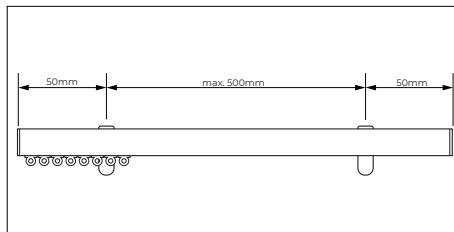
Step 1 - Bracket assembly

Attach the brackets to the L Bracket and secure them in place using the supplied screw.



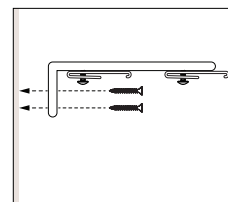
Step 2 - Bracket positioning

Ensure that each bracket is positioned at least 50 mm from each end of the blind, with any remaining brackets spaced no more than 500 mm apart. Check that all brackets are aligned evenly before securing them in place.



Step 3 - Mark, drill, and secure the brackets

If necessary, mark the screw positions by pencil through the bracket slots. Drill and plug the holes as required, then fix the brackets securely using appropriate fittings. (Please note that screws and fixings are not supplied).



Step 4 - Install the track

Once the brackets are securely fixed, remove the track from its packaging and carefully clip it into the brackets, ensuring that it is firmly secured in place. Refer to Step 3 for single track installation.

Operation & Maintenance

Warning! The operating instructions must be read before operating the blind.

Operating instructions

1. Ensure the track and curtain fabric is free of obstructions and that gliders move smoothly.
2. Gently pull the curtains along the track to open or close. Avoid forcing them to prevent damage.

Maintenance Instructions

This product is designed to be maintenance-free; however, we recommend carrying out regular visual inspections to ensure that no components are damaged, as this could lead to operating difficulties or pose a safety risk. If any maintenance is required, it should be completed promptly by a reputable blind company.

For smooth glider movement, a small amount of silicone-based lubricant may be applied.

Do not hang heavy items on the curtain track or pull forcefully. For safety and performance, do not make alterations to the track.